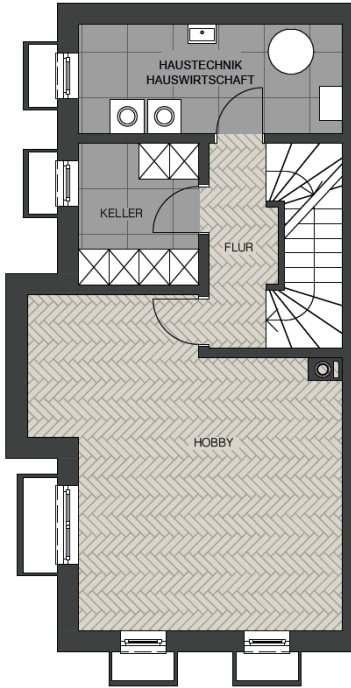


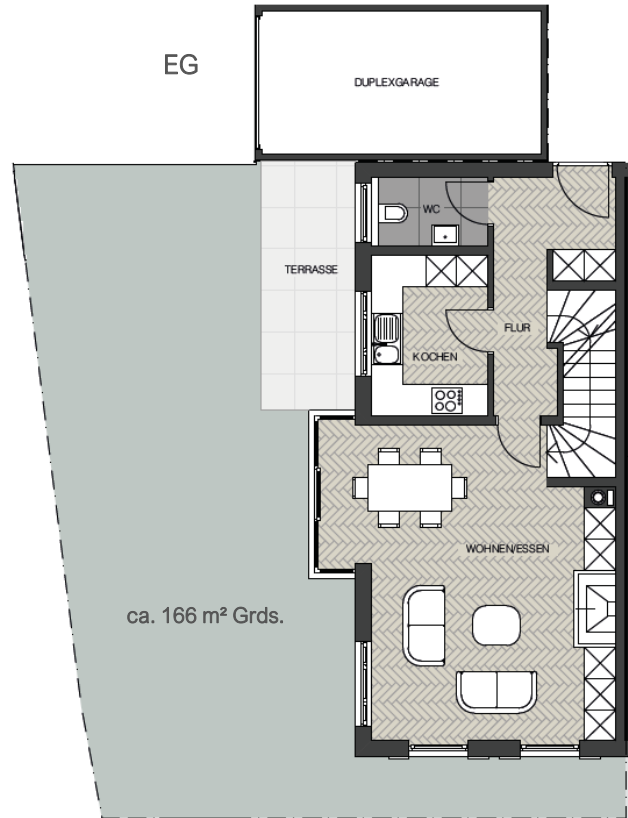
Stadthaus 1

Haus 1, 4,5 Zimmer + Hobby, ca. 142,38 m² Wfl., ca. 182,93 m² Nfl.

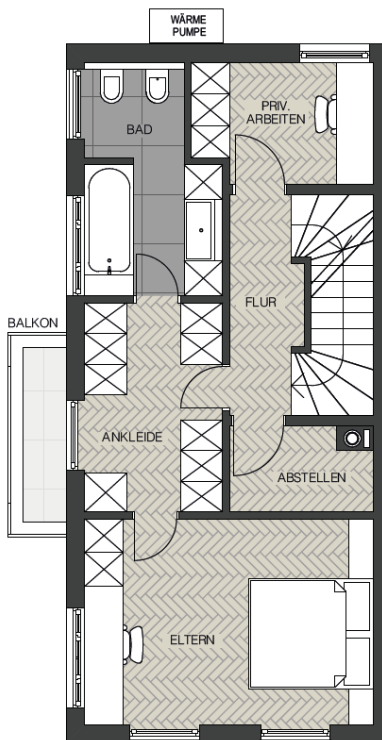
UG



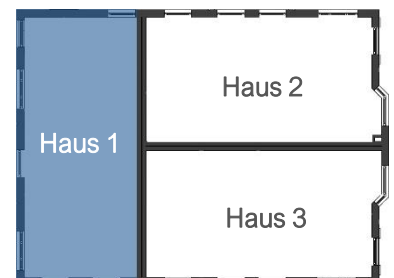
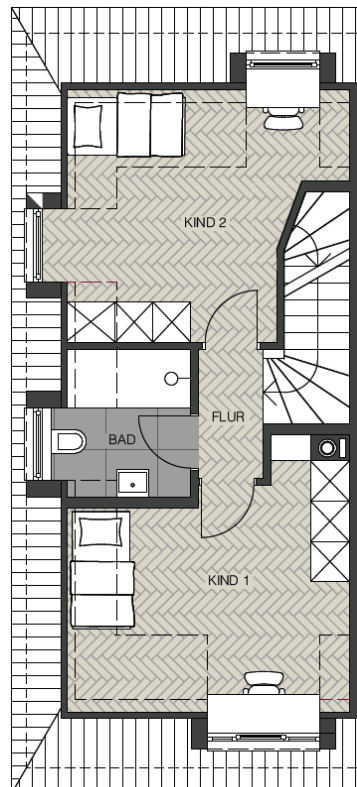
EG



OG



DG



Stadthaus 1

Flächenübersicht

UG	Wfl.	Nfl.
Hobby	13,27 m ²	26,27 m ²
Flur	1,96 m ²	3,91 m ²
HT/Hauswirtschaft	/	8,86 m ²
Keller	/	5,25 m ²
	15,23 m²	44,29 m²

EG	Wfl.	Nfl.
Wohnen/Essen	29,57 m ²	“
Kochen	6,99 m ²	“
Gard./Flur	7,47 m ²	“
WC	2,77 m ²	“
Terrasse	4,30 m ²	8,60 m ²
	51,10 m²	55,40 m²

OG	Wfl.	Nfl.
Eltern	15,79 m ²	“
Ankleide	7,66 m ²	“
Priv. Arbeiten	5,79 m ²	“
Bad	7,22 m ²	“
Flur	3,91 m ²	“
Abstellen	3,02 m ²	“
Balkon	0,97 m ²	1,95 m ²
	44,36 m²	45,34 m²

DG	Wfl.	Nfl.
Kind 1	13,11 m ²	15,90 m ²
Kind 2	12,37 m ²	15,33 m ²
Bad	4,19 m ²	4,65 m ²
Flur	2,02 m ²	“
	31,69 m²	37,90 m²
Gesamt Fläche	<u>142,38 m²</u>	<u>182,93 m²</u>



Ansicht Nord - West